

Neubau von drei Apartment-
häusern in Zehlendorf mit
Tiefgarage

Site: Berlin, Zehlendorf

Client: PANDION AG

Services: HOAI 5

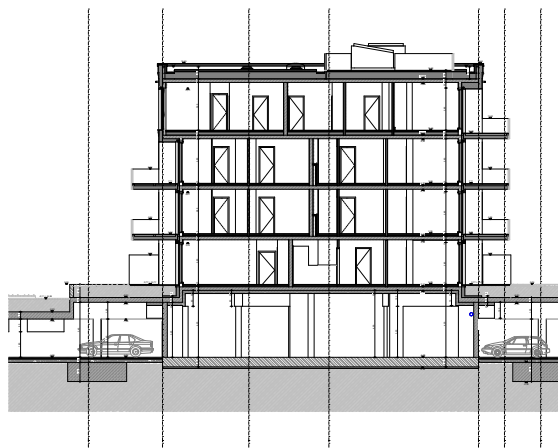
Duration: 2024

Cost: 1,3 Mio. €

Visualization: PANDION AG



PANDION PINES



In the heart of Berlin-Zehlendorf, on the site of a sprawling former plant nursery, three apartment buildings with a total of 105 condominiums are being developed on behalf of PANDION AG. Surrounded by a private park filled with numerous beautiful, old pine trees, this sustainable ensemble stands out for its environmentally friendly approach. The architecture, featuring flat green roofs, integrates harmoniously with the natural surroundings. Whether it's a terrace with a private garden, a balcony, a loggia, or a rooftop terrace, all residential units offer generous outdoor spaces with views of nature. Thanks to the incorporation of photovoltaic systems and a heat pump, the buildings meet the KfW Efficiency House Standard 40. A modern e-mobility concept seamlessly rounds off this residential project. Open floor plan designs provide high versatility in usage—ranging from compact 2-room apartments to spacious penthouses of 140 m² with rooftop terraces. The project proudly aims to achieve the Quality Seal for Sustainable Buildings (QNG).

